

ED PREP EXPRESS

E-NEWS FROM THE OFFICE OF EDUCATOR PREPARATION

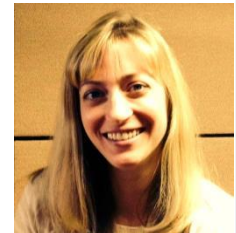


THE OHIO STATE UNIVERSITY

MARCH 27, 2014

FACULTY/STAFF SPOTLIGHT: CAROLYN KAPLAN

Carolyn Kaplan is a Graduate Assistant in the Office of Educator Preparation. Carolyn assists with projects related to NCATE accreditation, including data collection and drafting responses for sections of the upcoming institutional report. She also collaborates with programs on the preparation of their individual SPA reports. Carolyn can be reached at kaplan.169@osu.edu.



READING UPDATE

Those seeking the P-12 Reading Endorsement are required to take the OAE Reading Subtests I and II (038 & 039).

For practicing teachers in the 2014-2015 academic year, the Third Grade Reading Guarantee Alternatives for Current Teachers (2014-2015 school year) is the Praxis II Teaching Reading: Elementary Education (5203), NOT 0204/5204.

Starting in 2017, ECE and MCE candidates will be required to take an OAE for Reading. Those ECE candidates will also meet the state requirements for the 3rd Grade Reading Guarantee based on their ECE license.

OAE UPDATE

Those students that may be requesting Alternative Testing Arrangements such as ELL's with extra time or disability accommodations will need to follow this procedure (directions are available at <http://www.oh.nesinc.com/FindInfo.aspx?c=Alternative%20Testing%20Arrangements>).

- Go to the OAE site <http://www.oh.nesinc.com/>
- Select the test
- Pay for the test

DO NOT sign up for a specific date or location. DO send needed documentation to Pearson. See also:

- [Alternative Testing Arrangements Request Form](#)
- AND either [Required Documentation](#)
- OR [Institutional Verification of Documentation](#)

WAIT for Pearson Accommodations Officer approval of accommodations, then schedule the day/time of test.

FIP MODULES AVAILABLE FREE!

There are Formative Instructional Practice Modules available FREE for all Ohio Educators. The module topics are:

- [Foundations of Formative Instructional Practices](#)
- [Leading and Coaching Formative Instructional Practices](#)
- [Creating Clear Learning Targets](#)
- [FIP in Action](#)
- [Facilitating Formative Instructional Practices Guide](#)

For more information go to: <http://portal.battelleforkids.org/FIPOhio/resources/higher-education-access>.

edTPA UPDATE

Video Resource Available

A video series entitled *Candidate to Candidate: Reflections on Taking edTPA* is available to share with your students or cooperating teachers. The videos show teacher candidates discussing the challenges of edTPA, sharing advice for others completing the assessment, describing important takeaway and more. Check out these videos on the Resource page of the edtpa.aacte.org website.

Submission Update

Faculty and instructors should not open, examine, or evaluate the edTPA portfolios until *after* submission. Therefore, please do not access your student teachers' edTPA portfolios until fully submitted through TK20 and Pearson. After that point, you may look at the portfolios. If you have any questions, please contact [Kristall Day](#).

Portfolios Submitted

As of March 27th, a total of 202 edTPA portfolios for Spring 2014 candidates have been submitted to Pearson for national scoring. Congratulations to the students in Physical Education and Middle Childhood Education where the majority of their students have successfully submitted portfolios. Please let us know so that we can recognize and celebrate your students' efforts!

Final Forums

Thank you for participating in the recent edTPA Forums where we discussed helpful hints and lessons learned. We discovered some valuable edTPA portfolio writing resources which are available in program Buckeye Boxes. Contact your program manager for access.

Final edTPA semester forums are scheduled for Wednesday, April 23rd from 3:30 – 5:00 p.m., and Friday, April 25th from 10:00 – 11:30 a.m. Agenda and location TBD.

Support Deadline Approaching

Would you like an edTPA expert to attend a program-specific staff/faculty meeting? If faculty members, staff or program managers would like to schedule a program-specific edTPA meeting with the Office of Educator Preparation, please contact [Kristall Day](#) by Monday, March 31. Topics may include local evaluation, program-specific data, analysis of student work, curriculum considerations, and strategies for edTPA implementation for the 2014-2015 academic year.

edTPA Terminology

Candidates must provide **evidence** to support their performance on edTPA tasks. The **evidence** consists of artifacts that document how the candidate planned and implemented instruction AND commentaries that explain the artifacts. Citing and referencing specific **evidence** within the commentary responses is extremely important.

CONTACT US

Ed Prep Express is distributed by the Office of Educator Preparation located in the College of Education and Human Ecology. We are interested in sharing news from your area. Please send news items to:

EHE-EdPrepExpress@osu.edu

More information is available on our website at <http://go.osu.edu/edPrep> on topics such as assessments, background checks, edTPA, field placement, licensure and Tk20. The e-newsletters are archived there as well.

To unsubscribe, go to: EHE-EdPrepExpress@osu.edu

